

Made in America Oil Shear Clutches & Brakes For Heavy Movable Structures



Force Control Clutches and Brakes are ideal choices for many heavy movable structures such as movable bridges, stadium roofs, locks, dams or large bulk material handling equipment. The solid, totally enclosed, cast housings hold internal parts rigid, resist breaking or cracking, and prevent dust, dirt or moisture from entering the friction area.

Oil Shear Technology, the method of flowing torque transmitting transmission fluid through the friction stack, puts a film of fluid between the friction discs and drive plates during engagement. This significantly reduces mechanical wear, and removes the heat that degrades the friction materials for years of maintenance free service, and no adjustment needed-ever! This process also lubricates the inner components such as anti-friction bearings and splines.

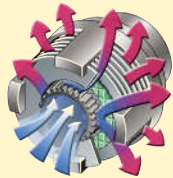
This design provides unheard of reliability for heavy movable structures, many of which operate outdoor in hot or cold, wet or snowy conditions. Failure to start or stop can be dangerous, cause major backups of car, ship, or rail traffic, flooding, and many other major issues.

Also, being made in America, with American components, meets the Buy American requirements of many government projects.

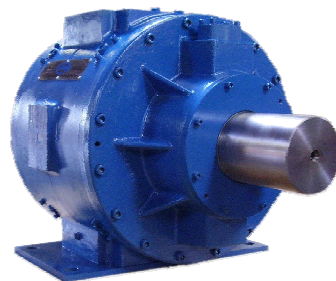


The advantages of Clutches and Brakes with Oil Shear Technology..

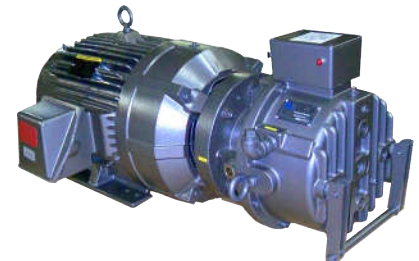
- **Longer life**—in typical applications it is not unusual to see 5 to 10 times the service life of most competitive products.
- **No Regular Maintenance***—There is no regular maintenance replacing friction discs, pads, or shoes, bearings, O-rings, etc.
- **No Adjustment—Ever!**—The unique design and Oil Shear Technology eliminate the need for regular adjustment.
- **Weatherproof**—The totally enclosed sealed cast housing makes the unit weather proof sealing out dust, dirt, moisture, and rain.
- **Low Temperature**—Oil Shear Technology helps cool the unit in high temperatures, and with optional internal heater useable down to -40 degrees.
- **Reliability**—The unique design, high quality components and Oil Shear Technology mean less chance of failure causing unexpected downtime.



**Annual fluid change recommended for maximum performance and life.*



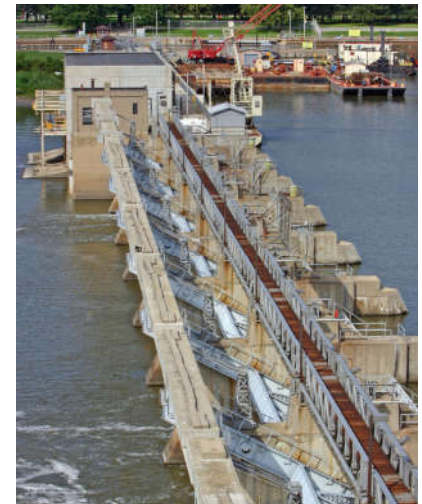
Positorq Brake
Hydraulically Actuated Brake
150,000 Lb. Ft. Static Torque
70,000 Lb. Ft. Continuous Slip



MagnaShear™ Brake Motor
25 HP Motor with 200 Lb. Ft. Brake
Arctic Duty (-40), Marine Duty
Bio-Degradable Fluid



Posidyne Clutch
Hydraulically Actuated Clutch
78,000 Lb. In. Torque
Totally Enclosed, Marine Duty



Force Control Clutches/Brakes Featuring Oil Shear Technology



MagnaShear
Spring Set—Electric Release
Coupler Brake



MagnaShear
Spring Set—Electric Release
Motor Brakes—Blower Motor



MagnaShear
Spring Set—Electric Release
Motor Brake—Encoder



MagnaShear
Spring Set—Electric Release
Low Temp. Motor Brakes



Posistop
Spring Set—Air/Hyd. Release
Motor Brakes



Posistop X Class
Spring Set—Air Release
Motor Brakes



Posistop X Class
Spring Set—Air Release
Custom Air Coupler Brake



Posistop
Spring Set—Air Release
Servo Motor Brake



Posidyne
Air/Hydraulically actuated
clutch brake



Posidyne
Hydraulically actuated clutch
marine duty



Posidyne
Air actuated totally enclosed
clutch brake C-Face mount



Positorq
Dynamic Stop—Continuous
Slip Brakes

Call 800-829-3244
www.forcecontrol.com

Force Control Industries, Inc.
3660 Dixie Highway | Fairfield, Ohio 45014 USA
Phone: 513-868-0900 Email: info@forcecontrol.com

